



Adds Multi-phase Job Costing/ Management and Progress Payments

Job Master

- Create Quick Job from order entry
- Created multi-phase job from Order Entry or Job Cost
- Unlimited number of Phases/Tasks
- Each phase can be a payment milestone for progress payments
- Attach Job Change orders to add new payment milestones
- Attach Job Orders to attach work without changing billing
- Generated work orders automatically attached to JOB
- Attach Work Orders to JOB Orders
- Manager releases billings by dollar or percentage by phase.
- Job Master Order Creates Estimate

Mapping

- Displays US job sites on Geographic street maps

←Job Standings

- Record/edit Estimate
- Compare estimate to actual
- Labor, Materials, Expenses, Revenue

Profile

- Define Job Site and contact

Notes

- Add unlimited job notes

Material Breakdown

- View all materials bought into the job or fulfilled from job orders

Work Order Breakdown

- View Job related Work Orders

PO Items

- View task related Po Line items

Expense Breakdown

- View all AP vouchers disbursements

Labor Breakdown

- View all Payroll timecard labor disbursements and/or labor code hours from Job Orders

←Invoice History

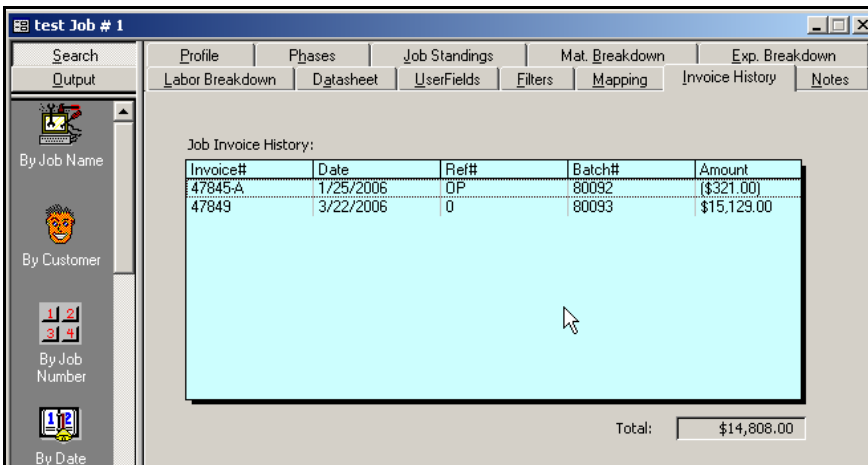
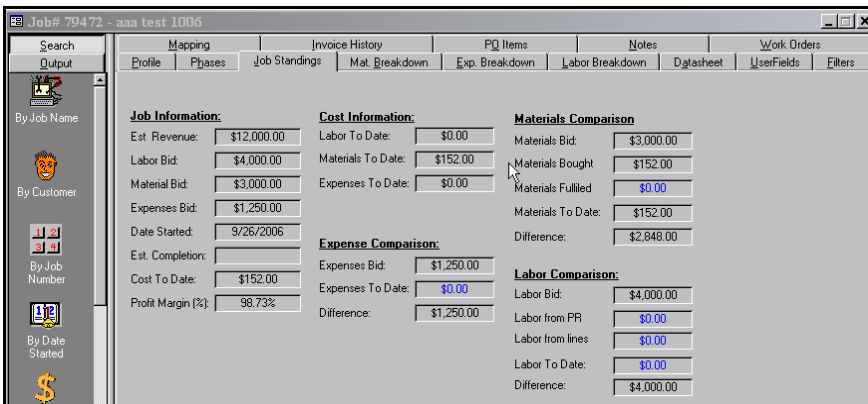
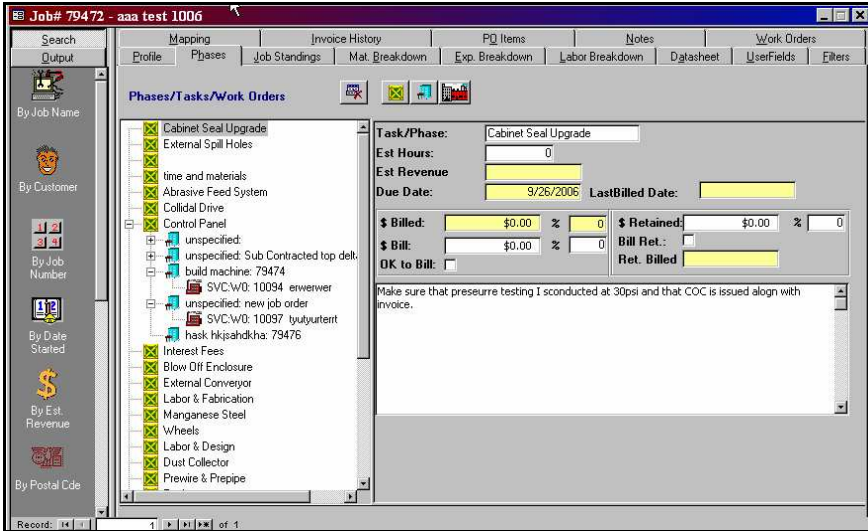
- View all invoices and credit memos tagged to job

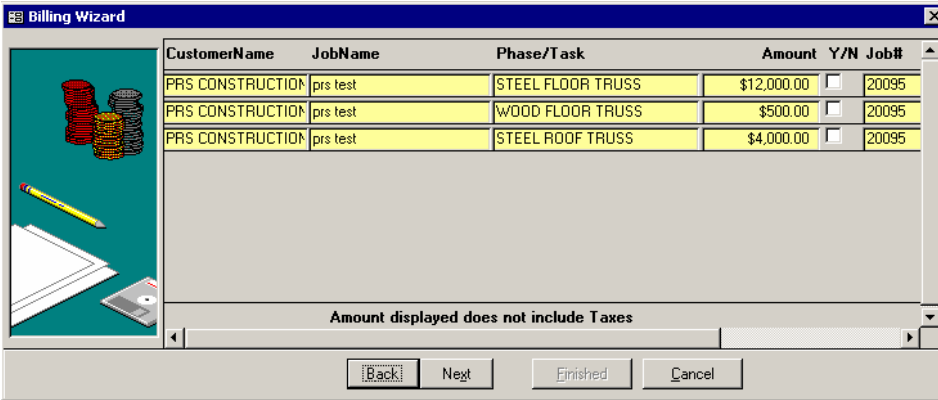
Datasheet

- View all filtered jobs in an editable spreadsheet like format

User Fields

- Add and complete any additional data fields that you may need to categorize or later filter your jobs.

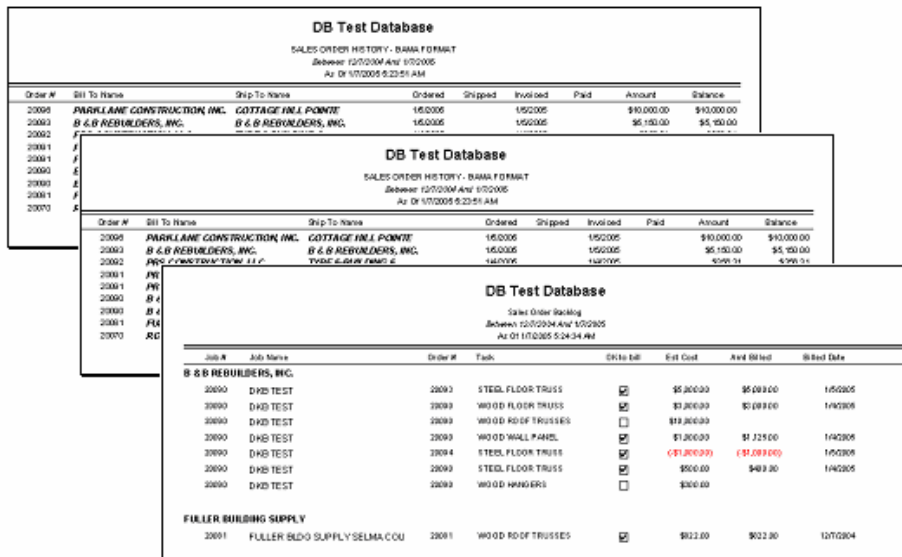




Job Master Billing Wizard

- Displays release billable phase payments (portions)
- Select one or more to generate customer invoices.
- Invoices are consolidated by Job so partial release on multiple phases being done in parallel will generate a single invoice, if selected together or separate if processed separately.

Reports

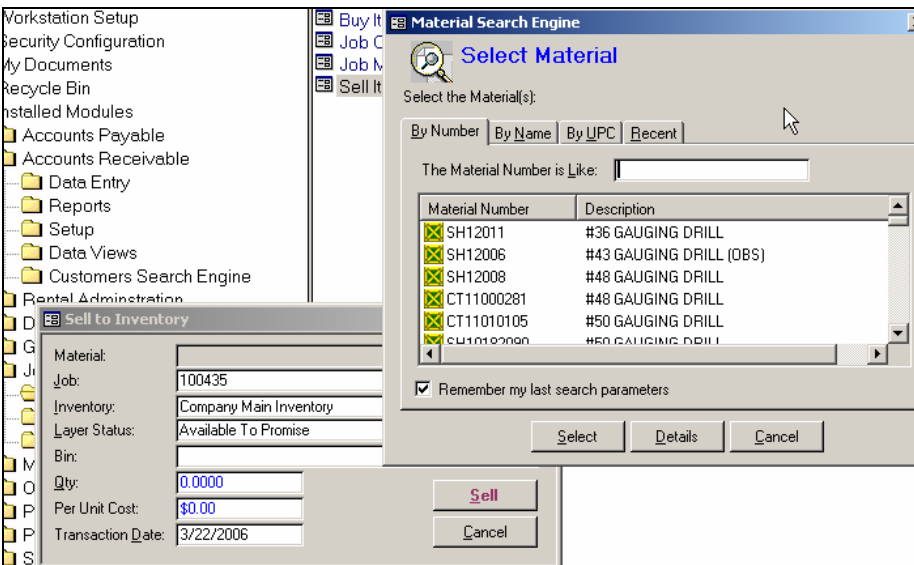


Reports

- Active Job Listing
- Job Details Portfolio
- Job Task/Phase Status
- Employee hours by Job
- Re-price Job at Current Prices
- Job Billing History
- PO Items/status by Job/Task
- Work Orders / status by Job/Task
- Payroll Disbursements by Job

Views

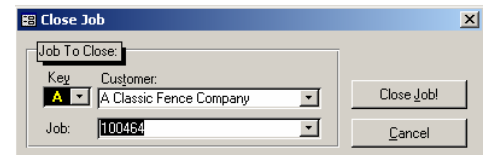
- Job Listing - By ZIP
- Job Listing -- by site by customer
- Expense BY zip, state
- Material expenses by zip, state
- Labor by zip, state



Buy Inventory Goods into Job

← Sell Goods back to Inventory

- Close Jobs



- Optional Interfaces;
- Job Labor from Time Clock
- FabTrol - estimates/ work orders
- Mitek - work orders/ materials