



Information Systems, LLC

Production Control



Designed to identify production requirements, provide shop floor routing documents, production instructions/signoffs, control and scheduling

BOM Kats

Material #: Both2Stock Description: 3/4 x 3/8 INSERT 3M SW 90/10

Qty	Item	Part #	Description	Cost Each	MIC
1.00	B733100	(1-25-25)X 1/2 70/30 OLET WB X SW 400H	\$3.00	1	
3.00	B912200	(1-12)X 1/4 OUTLET 90/10 3M SW	\$45.00	1	
5.00	B534700	(1-36) x 1/4 WB X SW 400H 90/10 OUTLET	\$1.11	1	
1.00			\$0.00	1	

WORKSKED

Material Number	Description	Customer	Qty	BO	Req Date	SRC	CPOE	Type	Priority	Status	Status Date	Material Number	Ref#
000133621	(212-36) X 2 90/10 WB X SW OUTLET 3M		0										
000133630	(2-12 -36) X 1-1/2 OUTLET 3M SW 70/30		0										
000133697	6 X 3 WELD OLET WB X BW CL-200 90/10		0										
000133778	1-1/2 70/30 BOSS PER CUSTOMER SPEC		0										
1101554M	4" FLGD CASCADING OFFICE 100GPM		0										
1110104M	1/4 SR90 3M SW 90/10		373										
11101060	3/8 SR90 3M SW 90/10		444										
11101098	1/2 x 1/4 SR90 3M SW 90/10		71										
11101100	1/2 SR90 3M SW 90/10												

Inventory Status

Material Number	In Production	Non - ATP	On Hand - ATP	Committed	On PO	Net
000133621	0	0	0	373	444	71

Production Control

Request Date	Material	Qty	BO	Made Qty	Par/Val	Comments	Author	Date Entered
6/8/2002	000133620	999	999	0	0	SRC	PO	W/O
6/8/2002	12301300	1.2E+09	999	0	0	SRC	PO	W/O

BOM/Production Control Sheets

- Create/edit multi-level Bill Of Materials (BOM)
- Create Production Instructions from user defined “workstop” tasks.
- Assign Generic or Product Specific Production Instruction to fabricated (“Make”) materials

Work Schedule

- At a glance, determine where each material is in the production process
- Sort WorkSked by Customer, Part Number, or by Type
- Prints WorkSked report according to the sort order
- Missing materials from exploded BOM show up as gray fields with blue font. Double-clicking them displays the order details
- Change and update inventory status and priority
- Drill down to source work orders and sales orders

Purchase Order Requirements

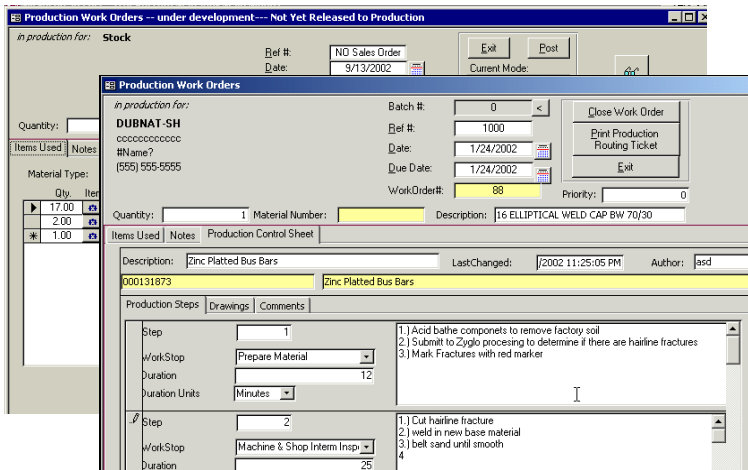
Request Date	Material Number	Material Description	Req Qty	Lot Qty	Par/Val			
6/8/2002	11101100	1/2 SR90 3M SW 90/10	16983	0	0	SRC	Select	W/O
6/8/2002	12301300	1-1/2 UNION 70/30 3M SW MSS-SP3	1.2E+09	0	0	SRC	Select	W/O
9/24/2002	14150100	1/2 COUPLING SW A-105 3000H	23	0	0	SRC	Select	W/O
9/24/2002	14150100	1/2 COUPLING SW A-105 3000H	12	0	0	SRC	Select	W/O
9/24/2002	14988076	(128) X 1-1/2 OUTLET WB X SW TIT	23	0	0	SRC	Select	W/O
9/24/2002	14988041	(126) X 3/4 OUTLET 3M WB X SW T	23	0	0	SRC	Select	W/O
10/4/2002	14715118	(12-3) X 3/8 45 OLET WB X SB 90/10	23	0	0	SRC	Select	W/O
10/4/2002	14988041	(126) X 3/4 OUTLET 3M WB X SW T	23	0	0	SRC	Select	W/O
10/4/2002	14715118	(12-3) X 3/8 45 OLET WB X SB 90/10	23	0	0	SRC	Select	W/O
7/4/2002	14988041	(126) X 3/4 OUTLET 3M WB X SW T	234	0	0	SRC	Select	W/O

Production

- Display categorized “Make” material requirements task list.
- Routes requirements to Purchase Order Requirements and creates Production Work Orders.
- Double click on part number to display “Net” Inventory Status: listing all stock on hand, stock not Available to Promise (Non-ATP), items reserved, and those on Purchase Order but not yet received
- Click on “SRC” to drill down to requirement source document: either Sales Order or other Work Order.

Purchase

- Aggregated Materials to be purchased work list
- Color Coded: Red = Overdue; Yellow = Warning (within 10 days.); White = needed > 10 days; Blue = Marked Done item; removed on close



Work Orders

- Completely customizable UnPosted Work Order enables special instructions, additional or substitute parts, and modified processes.
- Make quantity driven by sales order and material profile lot quantity.
- Quantity reduction optionally re-routes balance as new production requirement for subsequent build or PO re-route.
- Prints preliminary or finished Work Order shop floor routing ticket

Production Schedule

- Triggers the movement of goods through inventory
- Contains the Posted Work Orders
- Tracks/posts the status of goods in production
- The Pulled status marks BOM inventory items RFP (Reserved For Production)
- Put In Stock automatically updates reserved goods, augments inventory ATP (Available To Promise), and removes reserved goods previously pulled

Material#	000131873	Desc:	16 ELLIPTICAL WELD CAP BW 70/30
City:	1	RequestDate:	12/2/2001
PO#		Work Order #:	88
		Sales Order#:	1000
Cust#:	DUBNAT-SH	Customer:	DUBNAT-SH

Level	MaterialNumber	Quantity	Description	MIC
Raw Materials	B7333100	1	(1.25-2.5)X 1/2 70/30 O-LET WB X SW 400	0
	B91ZZ040	3	(1 - 1.2) X 1/4 OUTLET 90/10 3M# SW	0
	B934T040	5	(1 - 36) x 1/4 WB X SW 400# 90/10 OUTLE	0
Trade Goods	B7333100	2	(1.25-2.5)X 1/2 70/30 O-LET WB X SW 400	0
	B9235100	4	(1.25 x 3.5) x 1/2 O-LET 90/10 3M WBxPPT	0

Steps	DATE COMPLETE	SIGNATURE
1.) Acid bath components to remove factory soil 2.) Submit to Zygo processing to determine if there are hairline fractures 3.) Mark Fractures with red marker		
2.) Cut hairline fracture		

W/O#	Material Number	Description	DueDate	ScheduledDate	Work Order Status	Priority	Close Date	Pulled Date	Put In Stock	LastChg	W/O Date
130	000133620	(2 1/2-36)X 1 1/2 O-LET 3000# SW	6/8/2002	6/8/2002	Partial Pulled	1		6/18/2002		6/18/2002	6/11/2002
131	000133620	(2 1/2-36)X 1 1/2 O-LET 3000# SW	6/8/2002	6/8/2002	Order Acceptance	4				6/11/2002	6/11/2002
132	000133620	(2 1/2-36)X 1 1/2 O-LET 3000# SW	6/8/2002	6/8/2002	Order Acceptance	4				6/11/2002	6/11/2002
133	000133620	(2 1/2-36)X 1 1/2 O-LET 3000# SW	6/8/2002	6/8/2002	Order Acceptance	4				6/11/2002	6/11/2002
134	000133620	(2 1/2-36)X 1 1/2 O-LET 3000# SW	6/8/2002	6/8/2002	Order Acceptance	4				6/11/2002	6/11/2002
137	000133620	(2 1/2-36)X 1 1/2 O-LET 3000# SW	8/14/2002	8/14/2002	Order Acceptance	4				8/7/2002	8/21/2002
138	000133620	(2 1/2-36)X 1 1/2 O-LET 3000# SW	6/8/2002	6/8/2002	Order Acceptance	4				8/7/2002	8/7/2002
135	11101100	1/2 SR90 3M SW 90/10	6/8/2002	6/8/2002	Order Acceptance	4				6/11/2002	6/11/2002
136	000133620	(2 1/2-36)X 1 1/2 O-LET 3000# SW	6/8/2002	6/8/2002	Order Acceptance	4				8/7/2002	8/7/2002

Production Schedule

Additional Reports:

- BOM (Bill of Materials) Report
- Missing BOM
- Production Routing Document – (Shop Floor Routing) Missing PCS (Production Control Sheet – Instructions)

MaterialNumber	In Production
000133621	0
000133621	0
000133630	0
000133657	0
000133726	0
000133726	0
10015544	373
11101040	444
11101060	444
11101098	444
11101100	444
11101149	71

Inventory Status

- Net On Hand:
 - Displays inventory status by date
 - Details the materials that make up each item
 - Lists items in inventory, those on order, and those that are reserved

Inventory Status

- Inventory status shows aggregation of inventory for the selected material

PN	MaterialNumber	MaterialDescription	Quantity
SO	F1101200	1 SR90 3M SW 90/10 FORGING	45
Reserved	YX246500	3 BUTTERFLY VALVE BRZ (WAFER) STY-A TY-4	44
PO	YL145600	4 EDWARDS 689Y 600# CS CHECK VALVE	3
	WC401922	5/8-5/8-3/8 RED TEE CU CXC	14

Data	Number	Order date	Due Date	QTY	Net
11151300	30039	5/13/2002	5/13/2002	-3	-3
11151300	900042	7/12/2002	6/10/2002	234242	234239
11151300	900042	7/12/2002	6/10/2002	22	234261
11151300	900041	7/12/2002	6/10/2002	22	234283
11151300	30056	6/10/2002	6/10/2002	-234242	41
11151300	30054	6/10/2002	6/10/2002	-22	19

Net On Hand