


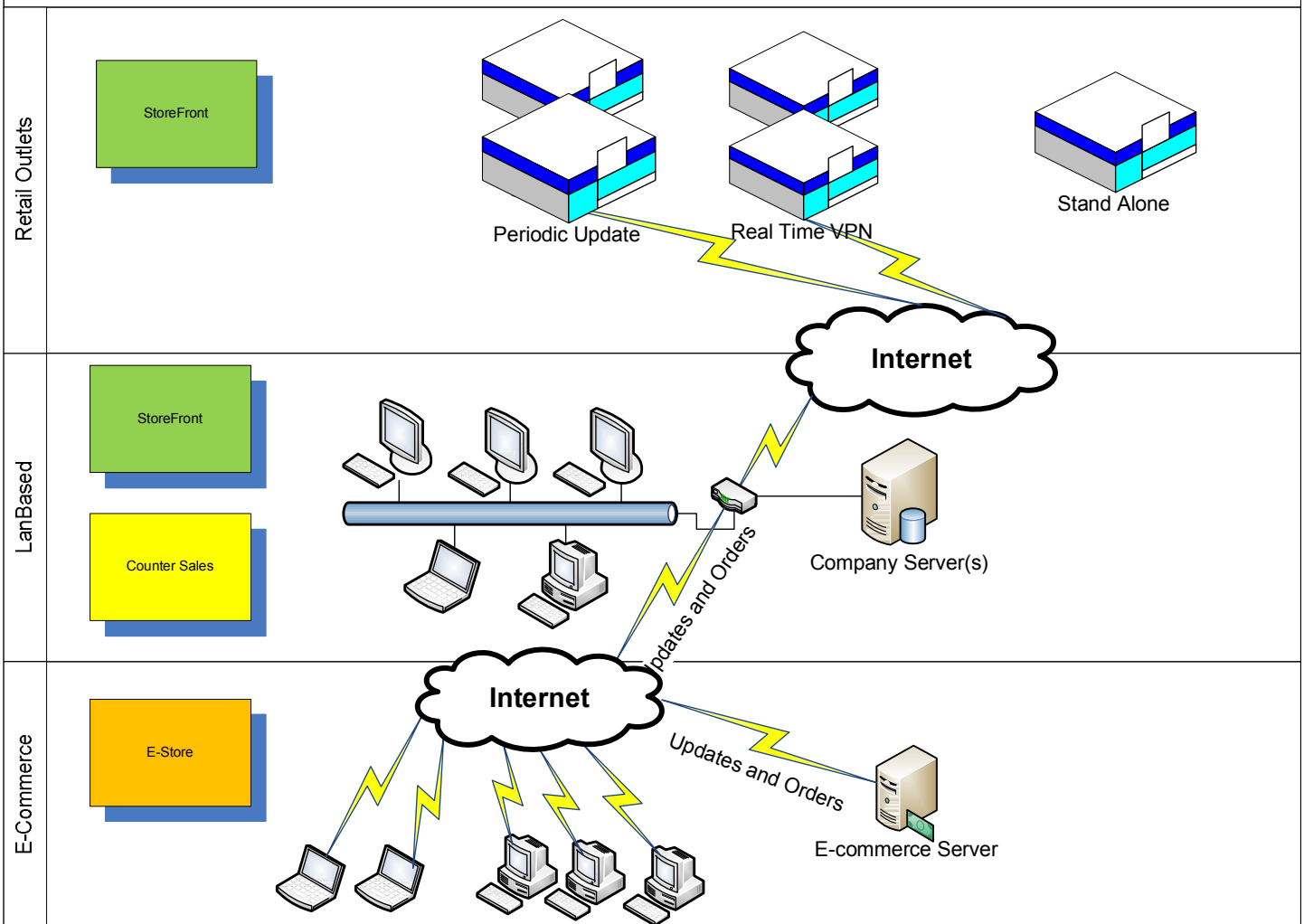


POS Hardware Configuration Options

	Good	Best	Best
			
Style	Component	Component	Counter Top
Bar Code Scanner	Symbol: tethered gun on stand	Symbol: tethered gun on stand	Symbol: Counter mounted omni-directional scanner
Keyboard	Keyboard / CC scanner	Keyboard / CC Scanner And preprogrammed function keys	Keyboard / CC Scanner And preprogrammed function keys
Receipt Printer	Star Micronix Thermal, auto cut receipt printer	Star Micronix Dot Matrix auto cut receipt printer With Journal Copy	Star Micronix Dot Matrix auto cut receipt printer With Journal Copy
Cash Drawer	15"	19"	Counter Housed Unit
CPU	512Mem,80GB,Intel XP Pro	1GBMem,80GB,Intel XP Pro	1GBMem,80GB,Intel XP Pro
Monitor	15" LCD	15"LCD	15" LCD
StoreFront25 Software	POS Station	POS Station	POS Station
Price	2295	2695	2895
Options			
17" LCD	Add 20	Add 20	Add 20
15" ELO Touch Screen	Add 250	Add 250	Add 250
12" Touch Screen	Add 400	Add 400	Add 400
POS Master Station Software – 1 license required per retail location.	Add 595	Add 595	Add 595
Bar Code Label Printer Varies with technology, speed, size, volume	350-600	350-600	300-600
Under Counter Drawer Mount	\$30	\$30	N/A
Adjustable Gun Mount Stand – for tethered gun	\$65	N/A	N/A
Pole Display 1 sided	Add 250	Add 250	Add 250
Pole Display 2 sided	Add 375	Add 375	Add 375



AdvanTec Inegrated Retail Solutions



- Each retail outlet can have up to 15 cash registers per Master POS station
- LAN Based solutions can offer StoreFront and Counter Sales on LAN and/or Terminal Server Expressions – UA plug in Modules
- E-Commerce – Hosted on site or at Commercial Hosting facilities: catalogs, images and prices maintained and updated directly from UA core system
- E-Store integrates with your existing web and provides catalog and shopping cart functions with optional credit card processing. Can take payment on line of defer billing till shipped. Optional real time inventory.